



## Isolation and Molecular Characterization of Extended Spectrum Beta Lactamase Producing *Escherichia coli* from Milk

Dhara Paghdar<sup>1\*</sup>, Jitendra Nayak<sup>1</sup>, R.A. Mathakiya<sup>2</sup>, B.C. Parmar<sup>3</sup>, H.K. Gida<sup>1</sup> and P.P. Bhavsar<sup>3</sup>

<sup>1</sup>Department of Veterinary Public Health & Epidemiology, Anand Veterinary College, Anand, INDIA

<sup>2</sup>Department of Veterinary Microbiology, Anand Veterinary College, Anand, INDIA

<sup>3</sup>Department of Livestock Products Technology, Anand Veterinary College, Anand, INDIA

\*Corresponding author: D Paghdar; E-mail: dhara.1898@gmail.com

Received: 06 Nov., 2019

Revised: 02 Feb., 2020

Accepted: 04 Feb., 2020

### ABSTRACT

Milk plays a major role as a source of nutrition in the diet but contaminated milk can be a source of harmful bacteria. *Escherichia coli* is opportunistic pathogen and is responsible for a wide range of infections. The prevalence of pathogenic multi-drug resistant extended-spectrum  $\beta$ -lactamase (ESBL)-producing *E. coli* is increasing and becoming a global concern. A study was carried out to isolate ESBL producing *E. coli* from 150 milk samples from Anand and around villages. Total 94(62.66%) samples were found positive as *E. coli* by isolation on MacConkey and Eosin Methylene Blue agar which were confirmed by primary & biochemical tests including Gram's staining. Antibiotic sensitivity test (ABST) was performed against 6 antibiotics and isolates found resistant to Aztrionem: 58(61%), Cefoxitin: 20(21%), Ceftriaxone: 56(59%), Ceftazidime: 62(65%), Cefpodoxime: 34(44.73%) & Ceftazidime + Clavulanic acid: 8(8.5%). A total 34(36.17%) ESBL producing *E. coli* were phenotypically confirmed by ABST and Epsilometer test. Genotypic confirmation of 34 isolates was done by PCR and isolates found positive for *bla*<sub>CTX M-3</sub> gene: 18(52.94%), *bla*<sub>CTX M-9</sub> gene 6(17.64%), *bla*<sub>SHV</sub> gene: 5(14.70%) and *bla*<sub>TEM</sub> gene: 5(14.70%). In summary, analyzed milk samples were found to have a health risk for consumers due to contamination by ESBL producing *E. coli*, their pathogenicity and treatment failure as a result of antibiotic resistance.

**Keywords:** Extended Spectrum Beta Lactamase (ESBL), *Escherichia coli*, Milk, Antibiotic resistance.

Milk is considered as nature's single most complete food and important part of the diet (Haug *et al.*, 2007). India is the largest milk producing countries in the world with dairy industry playing an important role in the rural economy generating huge self-employment (Batabyal *et al.*, 2018). Contamination of milk can occur due to several causes, moreover; its high nutritive value makes it an ideal medium for the rapid multiplication of bacteria, particularly under unhygienic production and storage at ambient temperatures (Kim *et al.*, 1983; OECD, 2005). Pathogens that have been involved in foodborne outbreaks include *Escherichia coli* (*E. coli*), *Salmonella* and *Staphylococcus aureus*. The presence of these pathogenic bacteria in milk emerged as major public health concerns, especially for those individuals who still drink raw milk (Riser, 1998). *E. coli* is mainly responsible for causing diarrhea, urinary

tract infection (UTI), hemolytic uremic syndrome (HUS), and hemorrhagic colitis (HC) (Lanjewar *et al.*, 2010).

Extensive reviews of multidrug resistant (MDR) commensal *E. coli* in animals and its impact on public health has been published recently (Szmolka and Nagy, 2013). One of the most important AMR (Antimicrobial resistance) mechanisms in *Enterobacteriaceae* family is production of extended-spectrum  $\beta$ -lactamase (ESBL) enzymes. ESBLs are plasmid as well as chromosome mediated and they are the results of the mutation of *TEM-1* and *TEM-2* and *SHV-I* genes (Nathisuwan, 2001). ESBL producers are resistant against wide variety of beta

**How to cite this article:** Paghdar, D., Nayak, J., Mathakiya, R.A., Parmar, B.C., Gida, H.K. and Bhavsar, P.P. (2020). Isolation and molecular characterization of extended spectrum beta lactamase producing *Escherichia coli* from milk. *J. Anim. Res.*, 10(1): 143-148.

lactam antibiotics including penicilins, 3<sup>rd</sup> generation cephalosporins and aztreonem. The emergence of ESBL producing *E. coli* in the food-producing animals and in foods of animal origin is a growing problem worldwide (Geser *et al.*, 2012). Thus, this study was carried out to investigate the microbiological quality and safety of raw cow milk in Anand (Gujarat, India) and around villages.

## MATERIALS AND METHODS

### Sample collection

A total 150 milk samples were collected from all the milking animals in the dairy cattle farms with at least 10 milking animals in a sterile container in aseptic condition using all the precautions (A- Navali: 25, B- Sai dairy farm: 50, C- Chikhodara: 25, D- Bedva: 25, E – Mogar: 25). All the collected samples were further sent to the laboratory in an icebox within 1 h of collection and tested immediately upon arrival for further study.

### Isolation and Identification

All the samples were first inoculated on MacConkey Agar (MCA) and incubated at 37°C for 24 hours. Plates showing pink colonies (lactose fermenting) were considered as positive and further transferred to Eosin Methylene Blue Agar (EMB) agar. Dark colonies with greenish metallic sheen after 24 hours of incubation at 37°C were considered to be of typical *E. coli*, were transferred to nutrient agar (NA) slants for further identification and characterization.

### Biochemical characterization

Biochemical tests like Indole, Methyl-red, Voges Proskauer, citrate utilization and TSI tests were employed for identification of *E. coli*, as per Edwards and Ewing, (1972).

### Serotyping of *E. coli* isolates

Cultures identified as *E. coli* were serotyped at National Salmonella and Escherchia Centre (NSEC), Central Research Institute (CRI), Kasauli (Himachal Pradesh, India).

### Antibiotic sensitivity test

Phenotypic confirmation of ESBL producing *E. coli* isolates was done using *in vitro* antibiotic sensitivity test by disc diffusion method using the discs supplied by HiMedia Laboratories Pvt. Ltd., Mumbai (India). Isolates were subjected to antimicrobial sensitivity tests against 6 antibiotics of 3<sup>rd</sup> generation cephalosporins viz.; Cefoxitin (30 µg), Ceftriaxone (30 µg), Ceftazidime (30 µg), Cefpodoxim (30 µg), Aztrionem (30 µg) and Ceftazidime + Clavulanic acid (30/10 µg). A difference of ≥ 5 mm between the zone diameters of ceftazidme and Ceftazidime + Clavulanic acid disc is measured to phenotypically confirm the ESBL production by the *E. coli* isolates under study.

### Epsilometer test

All the *E. coli* isolates were tested again for phenotypic confirmation of ESBL producing *E. coli* by E test using ESBL strip which carries two gradients; on the one

**Table 1:** Primer sequences for *bla*<sub>CTX M-3</sub>, *bla*<sub>CTX M-9</sub>, *bla*<sub>SHV</sub>, *bla*<sub>TEM</sub>

Target genes	Primer sequence (5' → 3')	Product size	References
<i>bla</i> <sub>CTX M-3</sub>	F : CGTCACGCTGTT GTT AGG AA	780 bp	Kim <i>et al.</i> 2005
	R : ACG GCT TTC TGC CTT AGG TT		
<i>bla</i> <sub>CTX M-9</sub>	F : GCGCATGGTGACAAAGAGAGTGCAA	876 bp	Yu <i>et al.</i> 2007
	R : GTTACAGCCCTTCGGCGATGATTC		
<i>bla</i> <sub>SHV</sub>	F : TCGCCTGTGTATTATCTCCC	768 bp	Shehata <i>et al.</i> 2016
	R : CGCAGATAAATCACCACAATG		
<i>bla</i> <sub>TEM</sub>	F : GAGTATTCAACATTTTCGT	698 bp	Shehata <i>et al.</i> , 2016
	R : ACCAATGCTTAATCAGTGA		

(F) = Forward primer; (R) = Reverse primer.

**Table 2:** Steps and conditions of thermal cycling for different primer pairs in PCR

Primers (Forward and Reverse)	Cycling conditions				
	Initial denaturation	Denaturation	Annealing	Extension	Final extension
<i>bla</i> <sub>CTX M-3</sub> (F)	94 °C	95 °C	55 °C	72 °C	72 °C
<i>bla</i> <sub>CTX M-3</sub> (R)	5 min	1 min	2 min	1 min	10 min
<i>bla</i> <sub>CTX M-9</sub> (F)	94 °C	95 °C	50 °C	72 °C	72 °C
<i>bla</i> <sub>CTX M-9</sub> (R)	5 min	1 min	1 min	1 min	7 min
<i>bla</i> <sub>SHV</sub> (F)	95 °C	94 °C	65 °C	58 °C	72 °C
<i>bla</i> <sub>SHV</sub> (R)	15 min	30 sec	2 min	30 sec	1 min
<i>bla</i> <sub>TEM</sub> (F)	95 °C	94 °C	65 °C	58 °C	72 °C
<i>bla</i> <sub>TEM</sub> (R)	15 min	30 sec	2 min	30 sec	1 min

Repeated 35 cycles

end, ceftazidime and on the opposite end ceftazidime plus clavulanic acid. MIC is interpreted as the point of intersection of the inhibition ellipse with the E test strip edge. Ratio of ceftazidime MIC and ceftazidime clavulanic acid MIC  $\geq 8$  indicates the presence of ESBL (Bush and Jacoby, 1995).

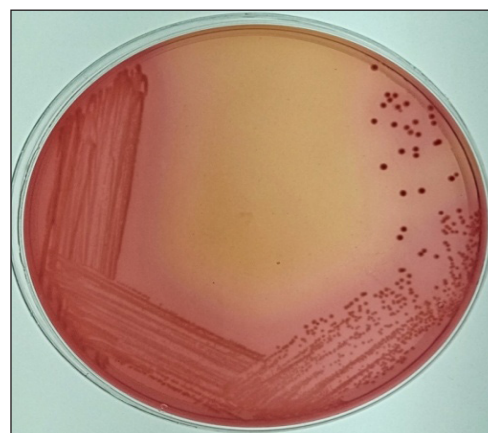
### Polymerase chain reaction

Genotypic confirmation of ESBL genes was done for all the phenotypically confirmed ESBL producing *E. coli* using the PCR protocols separately standardized for the detection of different ESB genes viz.; *bla*<sub>CTXM-3</sub>, *bla*<sub>CTXM-9</sub>, *bla*<sub>SHV</sub>, *bla*<sub>TEM</sub>. The PCR was standardized for the detection of four genes following the methodology as described in table 2 with suitable modifications (Kim *et al.*, 2005, Yu *et al.*, 2007 and Shehata *et al.*, 2016).

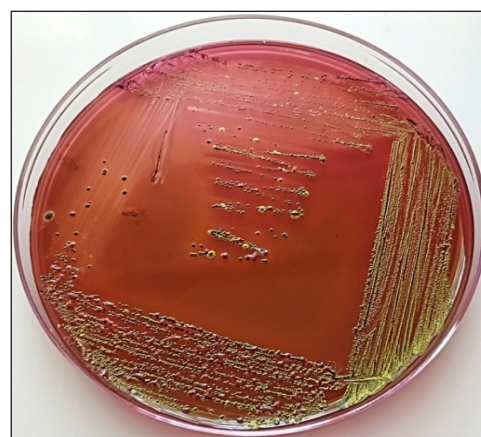
## RESULTS AND DISCUSSION

### Isolation and Identification

A total 94 (62.66%) *E. coli* isolates were recovered from 150 raw milk samples which were collected from Anand and around villages (Navali-17, Sai dairy farm-32, Chikhodara-14, Bedva-16, Mogar-15). All the positive isolates showed typical characteristics of *E. coli* viz., greenish metallic sheen on EMB agar (Fig. 2), positive indole and methyl red, negative VP and citrate utilization test and yellow slant, yellow butt and no H<sub>2</sub>S production on TSI agar.



**Fig. 1:** Lactose fermenting pink colonies of gram negative bacteria on MacConkey agar plate



**Fig. 2:** Greenish metallic sheen producing colonies of *E. coli* on Eosin Methylene Blue agar plate

### Serotyping of *E. coli* isolates

Cultures identified as *E. coli* were serotyped at National Salmonella and Escherichia Centre (NSEC), Central Research Institute (CRI), Kasauli (Himachal Pradesh, India). Out of 94 *E. coli* isolates 60 (63%), 28 (29%) isolates were untypable (UT) and 6 (6%) were found to be rough. A total 14 different serotypes were found in the present study namely; O83, O49, O157, O103, O22, O34, O26, O145, O146, O2, O141, O119, O84 and O120.

### Antibiotic sensitivity test

*In vitro* antimicrobial susceptibility test (ABST) was performed for all 94 *E. coli* isolates by disk diffusion method and results were as shown in Table 3. Maximum isolates (84.04%) were sensitive to antibiotic Ceftazidime + Clavulanic acid combination while maximum isolates (65.95%) were resistance to Ceftazidime. A total 34 (36%) isolates out of 94 isolated were found positive as ESBL producing *E. coli* when the difference in the inhibition zone was measured between ceftazidime and ceftazidime + clavulanic acid; organisms giving the difference in inhibition zone  $\geq 5$  were considered as positive ESBL producers.

**Table 3:** *In vitro* antimicrobial drug resistance pattern of *E. coli* isolates

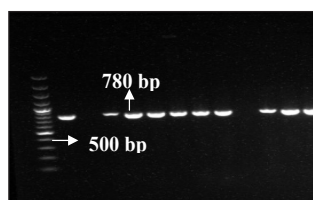
Antimicrobial agents	Sensitive	Intermediate	Resistant
Ceftazidime	12 (12.76%)	20 (21.27%)	62 (65.95%)
Aztreonem	21 (22.34%)	15 (15.95%)	58 (61.70%)
Ceftriaxone	16 (17.02%)	22 (23.40%)	56 (59.57%)
Cefpodoxime	36 (38.29%)	24 (4.53%)	34 (36.17%)
Cefoxitin	29 (30.85%)	45 (47.87%)	20 (21.27%)
Ceftazidime + Clavulanic acid	79 (84.04%)	07 (7.44%)	08 (8.5%)

### Epsilometer test

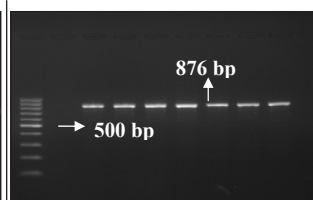
Out of 94 *E. coli* isolates, 34 (36.00%) isolates were phenotypically confirmed as ESBL producer through E test. Here for the interpretation ESBL producing *E. coli* give ratio of MIC of Mix +/ MIC of Mix  $\geq 8$  is considered as positive ESBL producers.

### Polymerase chain reaction

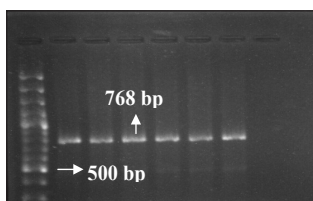
Out of 34 phenotypically confirmed ESBL producing *E. coli* isolates, 18 (52.94%) isolates were positive for *bla*<sub>CTX</sub><sub>M-3</sub> gene, 6 (17.64%) isolates were positive for *bla*<sub>CTX</sub><sub>M-9</sub>, 5 (14.70%) isolates were positive *bla*<sub>SHV</sub> & also 5 (14.70%) isolates were positive *bla*<sub>TEM</sub> genes.



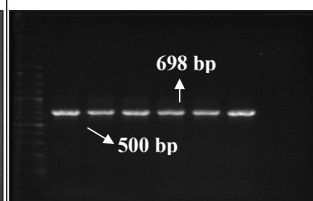
**Fig. 3:** PCR amplified product (780bp) for *bla*<sub>CTX</sub><sub>M-3</sub> gene



**Fig. 4:** PCR amplified product (876bp) for *bla*<sub>CTX</sub><sub>M-9</sub> gene



**Fig. 5:** PCR amplified product (768bp) for *bla*<sub>SHV</sub> gene



**Fig. 6:** PCR amplified product (698bp) for *bla*<sub>TEM</sub> gene

Here, in the present study 62.66% isolates from raw milk samples revealed characteristic features of *E. coli* which is in agreement with the prior findings; 65% by Chye *et al.* (2004), 52% by Virpari *et al.* (2013), 65% by Soomro *et al.* (2002), 63% by Uddin *et al.* (2011).

The serotypes reported by the National Salmonella and Escherichia Centre, Central Research Institute, Kasauli, were also supported by Manna *et al.* (2006), Miszczycha *et al.* (2013), Hardik *et al.* (2017) who reported *E. coli* serotype O157, O83, O84, O145 and O103 in their studies. Elhadidy & Mohammed (2013) and Blanco *et al.* (2004) reported the presence of serotypes O22, O120, O2, O141 O119, O34 and O49 from *E. coli* isolated from raw milk samples which is in agreement to the present study.

Gashe *et al.* (2018) reported 60% resistance against ceftazidime and 59% against ceftriaxone in a prior study. Xu *et al.* (2018) reported 20% resistance against cefoxitin, Jena *et al.* (2018) reported 61% resistance against aztreonem and 36% against cefpodoxime in their studies. Bhattacharya *et al.* (2015) observed higher degree (84.04%) of sensitivity of *E. coli* isolates when Ceftazidime

+ Clavulanic acid combination was used. Results of all these studies support the findings of the present study.

In the present study, total 34 (36%) *E. coli* isolates were found positive through E test which is in agreement to prior study by Cormican *et al.* (1996) where 82 (36%) *E. coli* isolates were found positive as ESBL producers out of 225.

In the present study, 18 (52%), 6 (17%), 5 (14%) and 5 (14%) isolates were positive for *bla*<sub>CTX-M-3</sub>, *bla*<sub>CTX-M-9</sub>, *bla*<sub>TEM</sub> and *bla*<sub>SHV</sub> genes respectively. Similar results were reported by Tekiner and Ozpinar (2016); where 53% prevalence of *bla*<sub>CTX-M-3</sub>, 12% for *bla*<sub>TEM</sub> & *bla*<sub>SHV</sub> genes, and 16% for *bla*<sub>CTX-M-9</sub> was observed.

## CONCLUSION

Analysed raw milk samples poses high health risk to the consumers because of such high prevalence (94%) of *E. coli* from milk. A high degree of the resistance (80%) was observed by ESBL producing *E. coli* towards beta lactam antibiotics which can be considered a reason of the treatment failure and economic losses thus it rises great public health concerns. It is suggested to administer beta lactam antibiotic along with suicidal inhibitors like Clavulanic acid, Tazobactam, and Salbactam for cost effective treatment and to meet the purpose of public health.

## Acknowledgements

Authors are thankful to department of Veterinary Public Health & Epidemiology, Anand Veterinary College, A.A.U., Anand.

## REFERENCES

- Batabyal, K., Banerjee, A., Pal, S., Dey, S., Joardar, S.N., Samanta, I., Isore, D.P. and Singh, A.D. 2018. Detection, characterization, and antibiogram of extended-spectrum beta-lactamase Escherichia coli isolated from bovine milk samples in West Bengal, India, *Vet. World.*, **11**: 1423-1427.
- Bhattacharya, C., Das, N. and Pal, D. 2015. Detection of extended spectrum Betaactamase (ESBL) producing bacteria from meat and meat products in Kolkata, India. *J. Dental. Medical. Sci.*, **14**: 52-55.
- Blanco, M., Blanco, J. E., Mora, A., Dahbi, G., Alonso, M. P., González, E. A. and Blanco, J. 2004. Serotypes, virulence genes, and intimin types of Shiga toxin (verotoxin)-producing Escherichia coli isolates from cattle in Spain and identification of a new intimin variant gene (eae-ξ). *J. Clin. Microbiol.*, **42**: 645-651.
- Bush, K., Jacoby, G.A. and Medeiros, A.A. 1995. A functional classification scheme for beta-lactamases and its correlation with molecular structure. *Antimicrob. Agents. Chemother.*, **39**: 1211-1233.
- Chye, F.Y., Abdullah, A. and Ayob, M K. 2004. Bacteriological quality and safety of raw milk in Malaysia. *Food. Microbiol.*, **21**: 535-541.
- Cormican, M.G., Marshall, S.A. and Jones, R.N. 1996. Detection of extended-spectrum beta-lactamase (ESBL)-producing strains by the Etest ESBL screen. *J. Clin. Microbiol.*, **34**: 1880-1884.
- Edwards, P.R. and Ewing, W.H. 1972. The genus *Salmonella. Identifica. Enterobacter.*, 146-207.
- Elhadidy, M. and Mohammed, M.A. 2013. Shiga toxin-producing Escherichia coli from raw milk cheese in Egypt: prevalence, molecular characterization and survival to stress conditions. *Lett. Appl. Microbiol.*, **56**: 120-127.
- Gashe, F., Mulisa, E., Mekonnen, M. and Zeleke, G. 2018. Antimicrobial resistance profile of different clinical isolates against third-generation cephalosporins. *Int. J. Pharm.*, 2018.
- Geser, N., Stephan, R. and Hächler, H. 2012. Occurrence and characteristics of extended-spectrum β-lactamase (ESBL) producing *Enterobacteriaceae* in food producing animals, minced meat and raw milk. *BMC Vet. Research*, **8**: 21.
- Hardik, P., Kalyani, I.H., Bariya, A., Dodiya, V., Sakhare, P. and Sharma, K. 2017. Isolation, characterization, serotyping and antibiogram studies of *E. coli* collected from diarrhoeic neonatal kids. *Int. J. Microbiol.*, **9**: 854-856.
- Haug, A., Høstmark, A.T. and Harstad, O.M. 2007. Bovine milk in human nutrition—a review. *Lipids Health Dis.*, **6**: 25.
- Jena, J., Debataa, N.K., Sahoob, R.K., Gaurb, K. and Subudhib, M. 2018. Molecular characterization of extended spectrum β-lactamase-producing Enterobacteriaceae strains isolated from a tertiary care hospital. *Microbial Pathog.*, **115**: 112-116.
- Kim, H. 1983. *Off-tastes in raw and reconstituted milk.* Food & Agriculture Org. (Vol. 35).
- Kim, J., Lim, Y.M., Rheem, I., Lee, Y., Lee, J.C., Seol, S.Y. and Cho, D.T. 2005. CTX-M and SHV-12 β-lactamases are the most common extended-spectrum enzymes in clinical isolates of Escherichia coli and Klebsiella pneumoniae collected from 3 university hospitals within Korea. *FEMS Microbiol. Lett.*, **245**: 93-98.
- Lanjewar, M., De Anuradha, S. and Mathur, M. 2010. Diarrheagenic *E. coli* in hospitalized patients: special



- reference to Shiga-like toxin producing *Escherichia coli*. *Indian J. Pathol. Microbiol.*, **53**: 75.
- Manna, S.K., Brahmene, M.P., Manna, C., Batabyal, K. and Das, R. 2006. Occurrence, virulence characteristics and antimicrobial resistance of *Escherichia coli* O157 in slaughtered cattle and diarrhoeic calves in West Bengal, India. *Lett. Appl. Microbiol.*, **43**: 405-409.
- Miszczczycha, S.D., Perrin, F., Ganet, S., Jamet, E., Tenenhaus-Aziza, F., Montel, M. C. and Thevenot-Sergentet, D. 2013. Behavior of different Shiga toxin-producing *Escherichia coli* serotypes in various experimentally contaminated raw-milk cheeses. *Appl. Environ. Microbiol.*, **79**: 150-158.
- Nathisuwan, S., Burgess D.S. and Lewis, J.S. 2001. ESBLs: Epidemiology, Detection and Treatment. *Pharmacotherapy*, **21**: 920-928.
- OECD. 2005. Dairy policy reform and trade liberalization. Organization for Economic Cooperation and Development (OECD publishing), **98**.
- Riser, E.T. 1998. Public health concerns. *In*: edited by Marth EH and Steele JL. *Appl. Dairy Microbiol.*, 263-403.
- Shehata, M.E., EL-Sherbiny, G. M., Mohamed, A.H. and Shafik, H.M. 2016. Molecular and Phenotypic Characterization of some antimicrobial resistance genes in *Escherichia coli* isolated from human and broiler chickens. *Int. J. Curr. Microbiol. Appl. Sci.*, **5**: 953-965.
- Soomro, A.H., Arain, M.A., Khaskheli, M. and Bhutto, B. 2002. Isolation of *Escherichia coli* from raw milk and milk products in relation to public health sold under market conditions at Tandojam. *Pak. J. Nutr.*, **1**: 151-152.
- Szmolka, A. and Nagy, B. 2013. Multidrug resistant commensal *Escherichia coli* in animals and its impact for public health. *Front. Microbiol.*, **4**: 258.
- Tekiner, I.H. and Ozpinar, H. 2016. Occurance and characteristics of extended spectrum beta-lactamase-producing Enterobacteriaceae from foods of animal origin. *Braz. J. Microbiol.*, **47**: 444-451.
- Uddin, M.A., Motazzim-ul-Haque, H.M. and Noor, R. 2011. Isolation and identification of pathogenic *Escherichia coli*, *Klebsiella* spp. and *Staphylococcus* spp. in raw milk samples collected from different areas of Dhaka City, Bangladesh. *S. J. Microbiol.*, **1**: 19-23.
- Virpari, P.K., Nayak, J.B., Thaker, H.C. and Brahmabhatt, M.N. 2013. Isolation of pathogenic *Escherichia coli* from stool samples of diarrhoeal patients with history of raw milk consumption. *Vet. World*, **6**: 659-663.
- Xu, Y., Sun, H., Bai, X., Fu, S., Fan, R. and Xiong, Y. 2018. Occurrence of multidrug-resistant and ESBL-producing atypical enteropathogenic *Escherichia coli* in China. *Gut Pathog.*, **10**: 8.
- Yu, Yunsong, Shujuan J., Yagang C., Weilin Z., Zeqing W., Lanjuan L. and Yilin M. 2007. Resistance of strains producing extended-spectrum  $\beta$ -lactamases and genotype distribution in China. *J. Infect.*, **54**: 53-57.